

Portavo 902 pH

The portable analyzer for Memosens and analog pH and ORP sensors.

Robust, intuitive portable analyzer for routine daily measurements in laboratories and processes.

Facts and Features

- Memosens sensors and analog pH/ORP sensors can be used on one device
- A sensor quiver protects the sensor from drying out or being damaged in daily use.
- Robust housing with IP66/67, also for outdoor use
- The mineral glass display is perfectly readable even after years
- Temperature probe adjustment in the Memosens sensor (offset correction)



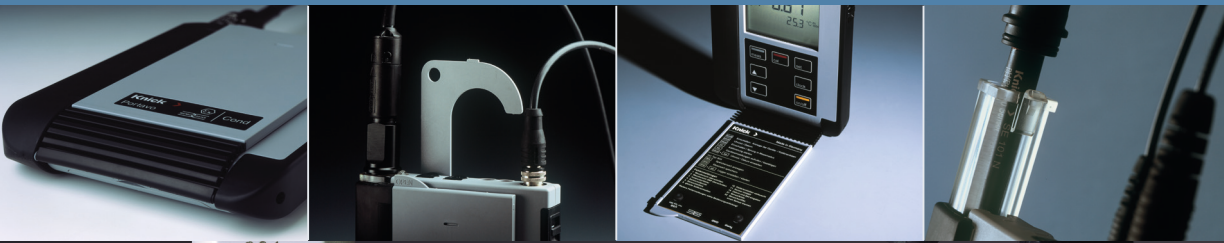
По вопросам продаж и поддержки обращайтесь:

Архангельск (8182)63-90-72
 Астана +7(7172)727-132
 Астрахань (8512)99-46-04
 Барнаул (3852)73-04-60
 Белгород (4722)40-23-64
 Брянск (4832)59-03-52
 Владивосток (423)249-28-31
 Вологда (8172)26-41-59
 Воронеж (473)204-51-73
 Екатеринбург (343)384-55-89
 Иваново (4932)77-34-06
 Ижевск (3412)26-03-58
 Иркутск (395) 279-98-46
 Киргизия (996)312-96-26-47

Казань (843)206-01-48
 Калининград (4012)72-03-81
 Калуга (4842)92-23-67
 Кемерово (3842)65-04-62
 Киров (8332)68-02-04
 Краснодар (861)203-40-90
 Красноярск (391)204-63-61
 Курск (4712)77-13-04
 Липецк (4742)52-20-81
 Магнитогорск (3519)55-03-13
 Москва (495)268-04-70
 Мурманск (8152)59-64-93
 Набережные Челны (8552)20-53-41
 Нижний Новгород (831)429-08-12
 Казахстан (772)734-952-31

Новокузнецк (3843)20-46-81
 Новосибирск (383)227-86-73
 Омск (3812)21-46-40
 Орел (4862)44-53-42
 Оренбург (3532)37-68-04
 Пенза (8412)22-31-16
 Пермь (342)205-81-47
 Ростов-на-Дону (863)308-18-15
 Рязань (4912)46-61-64
 Самара (846)206-03-16
 Санкт-Петербург (812)309-46-40
 Саратов (845)249-38-78
 Севастополь (8692)22-31-93
 Симферополь (3652)67-13-56
 Таджикистан (992)427-82-92-69

Смоленск (4812)29-41-54
 Сочи (862)225-72-31
 Ставрополь (8652)20-65-13
 Сургут (3462)77-98-35
 Тверь (4822)63-31-35
 Томск (3822)98-41-53
 Тула (4872)74-02-29
 Тюмень (3452)66-21-18
 Ульяновск (8422)24-23-59
 Уфа (347)229-48-12
 Хабаровск (4212)92-98-04
 Челябинск (351)202-03-61
 Череповец (8202)49-02-64
 Ярославль (4852)69-52-93



MEMO SENS

3-year warranty!

Original size

Specifications

pH/mV input (analog)	pH socket, DIN 19 262 (13/4 mm)	
	pH range	-2 ... 16
	Decimal places ^{*)}	2 or 3
	Input resistance	1 x 10 ¹² Ω (0 ... 35 °C / 32 ... 86 °F)
	Input current	1 x 10 ⁻¹² A (at RT, doubles every 10 K)
	Measuring cycle	Approx. 1 s
	Measurement error ^{1,2,3)}	< 0.01 pH, TC < 0.001 pH/K
	mV range	-1300 ... 1300 mV
	Measuring cycle	Approx. 1 s
	Measurement error ^{1,2,3)}	< 0.1 % meas. val. + 0.3 mV, TC < 0.03 mV/K
Temperature input	2 x 4 mm dia. for integrated or separate temperature detector	
	Measuring ranges	NTC 30 kΩ -20 ... 120 °C / -4 ... 248 °F Pt1000 -40 ... 250 °C / -40 ... 482 °F
	Measuring cycle	Approx. 1 s
	Measurement error ^{1,2,3)}	< 0.2 K (Tamb = 23 °C / 73.4 °F); TC < 25 ppm/K
Memosens pH input (also ISFET)	M8 socket, 4 pins, for Memosens lab cable	
	Display ranges ⁴⁾	pH -2.000 ... 16.000 mV -2000 ... 2000 mV Temperature -50 ... 250 °C / -58 ... 482 °F
	pH calibration	
Sensor standardization ^{*)} Operating modes ^{*)}	Calimatic	Calibration with automatic buffer recognition
	Manual	Manual calibration with entry of individual buffer values
	Data entry	Data entry of zero and slope
	Temperature calibration (TAN option)	Software option SW-P002 for temperature probe adjustment in the Memosens sensor (offset correction)
	Calimatic buffer sets ^{*)}	-01- Mettler-Toledo
-02- Knick CaliMat		2.00/4.00/7.00/9.00/12.00
-03- Ciba (94)		2.06/4.00/7.00/10.00
-04- NIST technical		1.68/4.00/7.00/10.01/12.46
-05- NIST standard		1.679/4.006/6.865/9.180
-06- HACH		4.01/7.00/10.01/12.00
-07- WTW techn. buffers		2.00/4.01/7.00/10.00
-08- Hamilton		2.00/4.01/7.00/10.01/12.00
-09- Reagecon		2.00/4.00/7.00/9.00/12.00
-10- DIN 19267		1.09/4.65/6.79/9.23/12.75
Permissible calibration range	Zero point	6 ... 8 pH
With ISFET:	-750 ... 750 mV	Operating point (asymmetry)
Slope	Approx. 74 ... 104 %	

Specifications

Memosens ORP input	M8 socket, 4 pins, for Memosens lab cable		
	Display ranges ⁴⁾	mV Temperature	-2000 ... 2000 mV -50 ... 250 °C / -58 ... 482 °F
Sensor standardization ^{*)}	ORP calibration (zero adjustment)		
	Permissible calibration range	ΔmV (offset)	-700 ... 700 mV
	Temperature calibration (TAN option)	Software option SW-P002 for temperature probe adjustment in the Memosens sensor (offset correction)	
Calibration timer ^{*)}	Interval	1 ... 99 days, can be switched off	
Sensoface	Provides information on the sensor condition Evaluation of zero/slope, response, calibration interval		
Connections	2 x socket, 4 mm dia., for separate temperature probe 1 x M8 socket, 4 pins, for Memosens lab cable 1 x pH socket, to DIN 19262		
Display	LCD STN 7-segment display with 3 lines and icons		
	Sensoface	Status indication (friendly, neutral, sad)	
	Status indicators	for battery power level	
	Notices	Hourglass	
Keypad	[on/off], [cal], [meas], [set], [▲], [▼], [clock]		
Diagnostic functions	Sensor data (Memosens only)	Manufacturer, sensor type, serial number, operating time	
	Calibration data	Calibration date, zero and slope	
	Device self-test	Automatic memory test (FLASH, EEPROM, RAM)	
	Device data	Device type, software version, hardware version	
Data retention	Parameters, calibration data > 10 years		
EMC	EN 61326-1 (General Requirements)		
	Emitted interference	Class B (residential environment)	
	Immunity to interference	Industrial applications	
	EN 61326-2-3		
RoHS conformity	According to directive 2011/65/EU		
Power supply	4 x AA alkaline or lithium batteries		
	Operating time	Approx. 1000 h (alkaline)	
Nominal operating conditions	Ambient temperature	-10 ... 55 °C / 14 ... 131 °F	
	Transport/Storage temp.	-25 ... 70 °C / -13 ... 158 °F	
	Relative humidity	0 ... 95 %, short-term condensing allowed	
Housing	Material	PA12 GF30 (silver gray RAL 7001) + TPE (black)	
	Protection	IP 66/67 with pressure compensation	
	Dimensions	Approx. 132 x 156 x 30 mm / 5.2 x 6.14 x 1.18 inches	
	Weight	Approx. 500 g / 1.10 lbs	

* user-defined

1) at nominal operating conditions

2) ± 1 count

3) plus sensor error

4) ranges depending on Memosens sensor